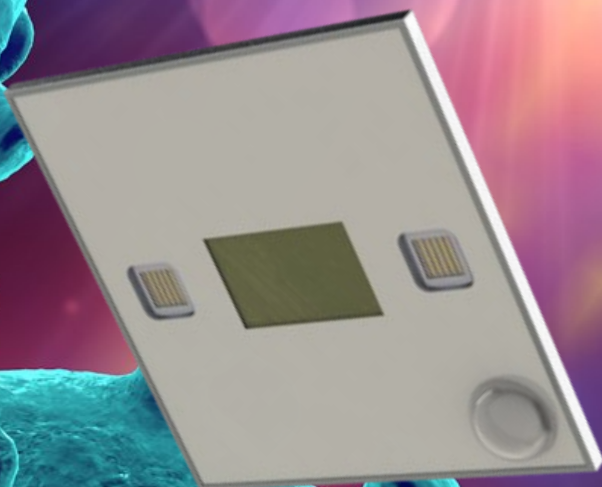


JUGANU

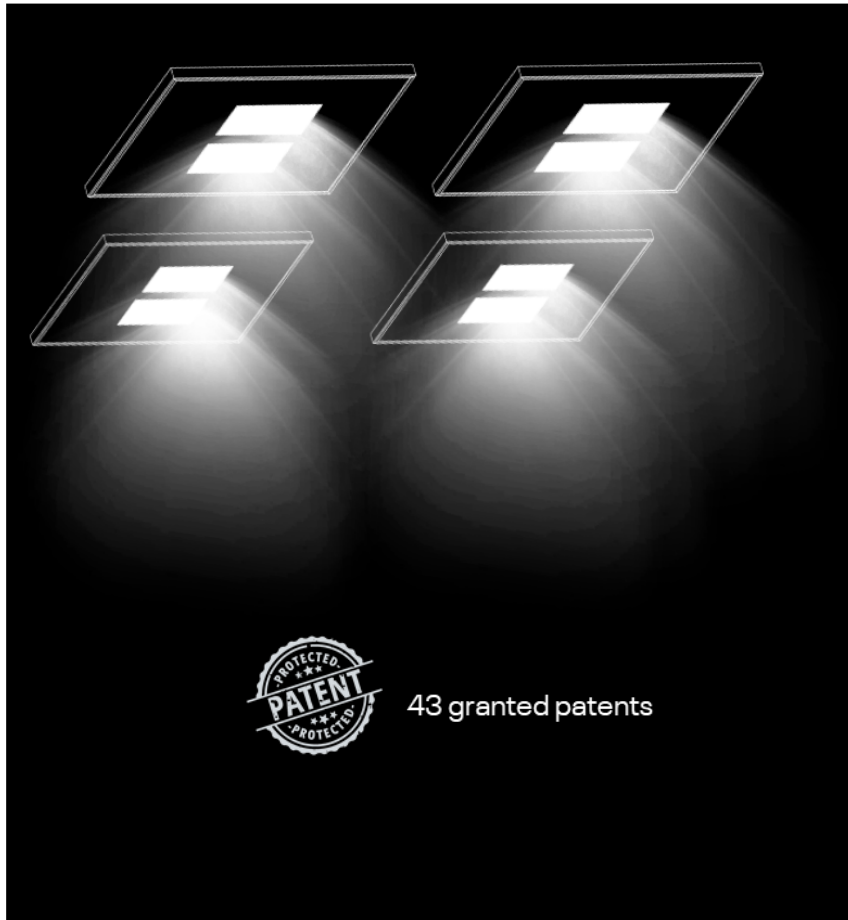


J. Protect by JUGANU

Juganu J.Protect Luminaries

Juganu's J.Protect Luminaries — AiO Better Light, Protection and Disinfection

Harnessing the power of Years of Experience and 43 Granted Patents, Juganu is helping the world fighting the COVID-19 Pandemic. Juganu's Smart Lighting Planar Technology with the JMix UVA for continuous protection and the Disinfection Mode, is the most advanced and safe Luminary that can replace existing Light Fixture with a an AiO solution as well as the perfect solution for a new installation, providing you with Smart lighting, Dimming, Color Temp. Control, Continuous Protection and Disinfection.



EXCELLING NATURAL LIGHT



CRI/TLCI
>90

Unparalleled
Uniformity

Color Change

FOR HEALTH AND WELLBEING

Illumination

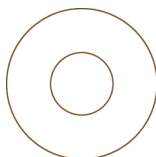
Protection

Disinfection

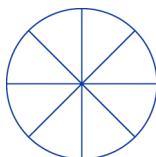
*Our disinfection technology is designed
to complement current cleaning Practices*



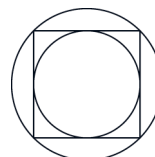
Light



See



Connect



Think



Protect



FOAM

J.Protect Panel Series C

Harnessing The Power Of Light To Protect You

Providing light and protection for public spaces - This unique luminaire mixes visible and non-visible light to function both as a general lighting fixture with the ability to continuously protect from disease carrying pathogens, and a secondary function which manually activates disinfect-

J.Protect Series C

A multi-functional Luminary with General Lighting, JMix UVA for Continuous Protection and a UVC Mode for Fast Disinfection*.

J.Protect C is designed for standard ceiling height and grid system, such as Office environments, open spaces and recessed ceilings.

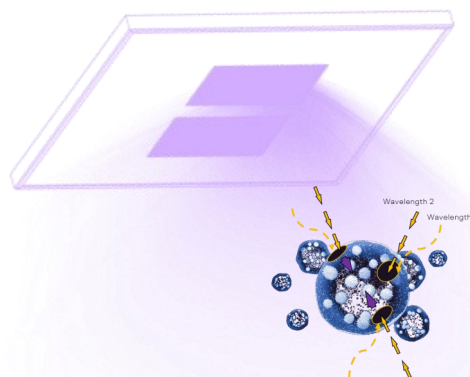
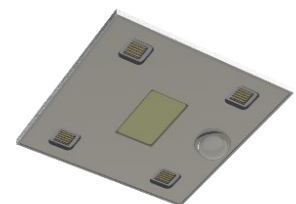
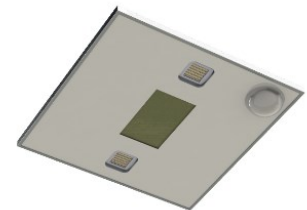
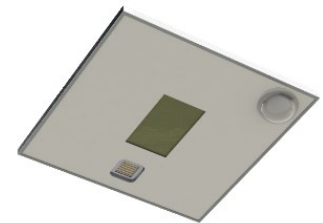
*Optional: JMix with UVA, Excluding UVC

Features

- General Illumination
- Invisible Protection
- Disinfection Cycle
- Wireless Control
- Safety Features
- Planar Technology

Benefits

- Dual Functionality
- Continuous Protection
- Maintenance-Free
- Easy Installation



For Detailed Data Sheet & Specification, please contact us: sales@juganu.com

J.Protect Panel Series H

Harnessing The Power Of Light To Protect You

Providing light and protection for public spaces - This unique luminaire mixes visible and non-visible light to function both as a general lighting fixture with the ability to continuously protect from disease carrying pathogens, and a secondary function which manually activates disinfect-

J.Protect Series H

A multi-functional Luminary with General Lighting, JMix UVA for Continuous Protection and a UVC Mode for Fast Disinfection.

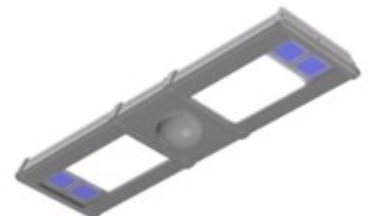
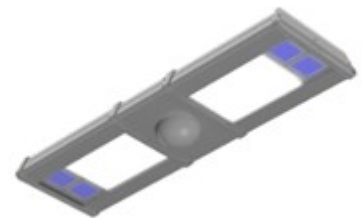
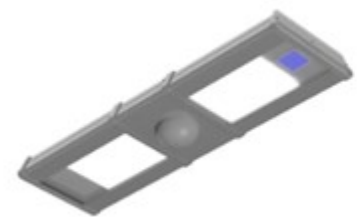
J.Protect H is designed for high ceiling, such as Warehouses environments, Retails Spaces and Supermarkets.

Features

- General Illumination
- Invisible Protection
- Disinfection Cycle
- Wireless Control
- Safety Features
- Planar Technology

Benefits

- Dual Functionality
- Continuous Protection
- Maintenance-Free
- Easy Installation



For Detailed Data Sheet & Specification, please contact us: sales@juganu.com

J.Protect Panel Series S

Harnessing The Power Of Light To Protect You

Providing light and protection for public spaces - This unique luminaire mixes visible and non-visible light to function both as a general lighting fixture with the ability to continuously protect from disease carrying pathogens, and a secondary function which manually activates disinfect-

J.Protect Series S

A multi-functional Luminary with General Lighting, JMix UVA for Continuous Protection and a UVC Mode for Fast Disinfection.

J.Protect S is designed for small rooms and smaller spaces such as Hotel Rooms, Small Bathrooms, and for places where fixtures size is limited by space.

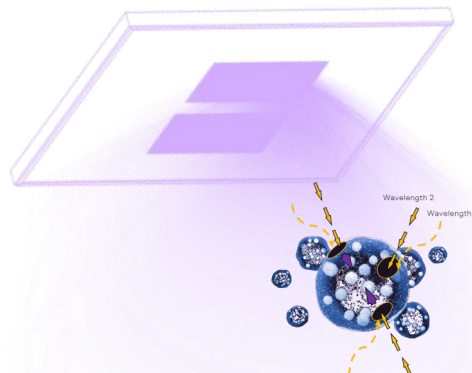
Features

- General Illumination
- Invisible Protection
- Disinfection Cycle
- Wireless Control
- Safety Features
- Planar Technology



Benefits

- Dual Functionality
- Continuous Protection
- Maintenance-Free
- Easy Installation



For Detailed Data Sheet & Specification, please contact us: sales@juganu.com

J.Protect Planar Technology



JUGANU 



43 Granted Patents!

Morphology Benefits

- Ultra Thin light module enables innovative design
- Create Soft light and reduces shadows
- Eliminates multiple hotspots
- MRR – Multiple random rays

LightCell™ Technology Benefits

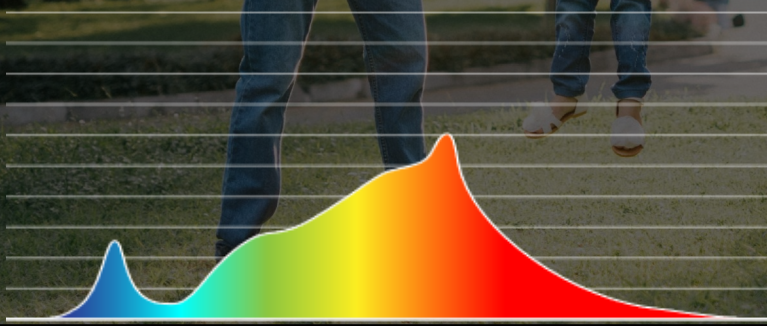
- High Quality of Light – CRI, Color Consistency
- High Efficiency – up to 140 lm/W
- Remote Phosphor Benefits
- True light mix
- Increased conversion efficiency
- Long life

Shadow Reduction



- Soft Shadows
- Lambertian Distribution
- No Hotspots

Spectrum



- High R9
- Reduce Blue Light Hazard
- Tunable Spectrum

Safer than the Sun Light



Did you know?

Less than 3 minutes of exposure to direct sunlight is equal to the maximum amount of J. Protect mix of UV-A & light, a person may be exposed to in a typical workday under Juganu's J. Protect Continuous Protection & Disinfection lights.

What is IEC 62471?

IEC 62471 photobiological safety standards weren't developed overnight; its origins can be traced from efforts going even further back than the 1990s.

Since then, there have been several modifications to keep up with LED technology, ultimately leading to the development of IEC 62471, Photobiological Safety of Lamps and Lamp Systems.

Today, IEC 62471 is recognized in many countries as the key standard addressing photobiological safety issues related to lamps, lamp systems and other non-lamp sources of optical radiation.

IEC 62471 assesses the level of harmful radiation of a given product through two key radiometric parameters: irradiance and radiance.

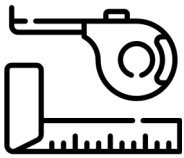
- Irradiance measures the rate at which radiation falls onto a surface and evaluates the potential hazard it may have on skin and front of the eyes.
- Radiance measures the amount of light collected by the pupil and evaluates the risk of hazards to the retina of the eye.

Once a product's effective radiance and irradiance are determined and compared to the hazard limits defined by the IEC 62471 standards, the product is then placed into specific categories to communicate the overall level of risk.

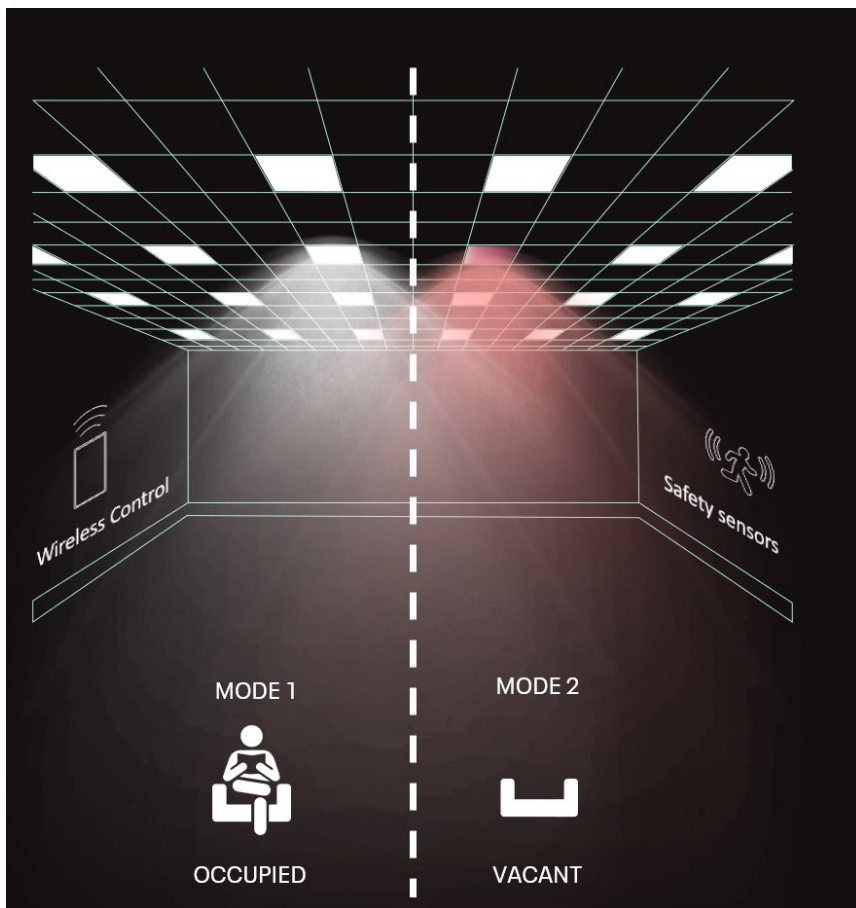


Multifunctional & Protecting

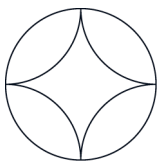
Standard Fixture Size



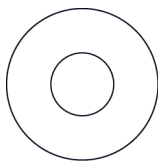
Increased functionality by using JLED based system for lighting and disinfecting in a fully connected installation



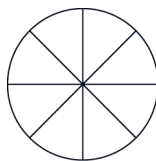
- ✓ Meets industry standards for a direct replacement luminaire in form and function
- ✓ Protection and disinfection capabilities
- ✓ Effective in hard to reach areas
- ✓ Integrated safety features
- ✓ Advanced wireless control for single & multiple fixture groups
- ✓ Fastest and most cost efficient way to treat large areas
- ✓ Low maintenance with 50,000 hours lifetime and >1% output loss per year
- ✓ Planar light sources to reduce shadows and maximize exposed areas



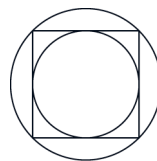
Light



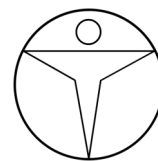
See



Connect



Think



Protect



FOAM

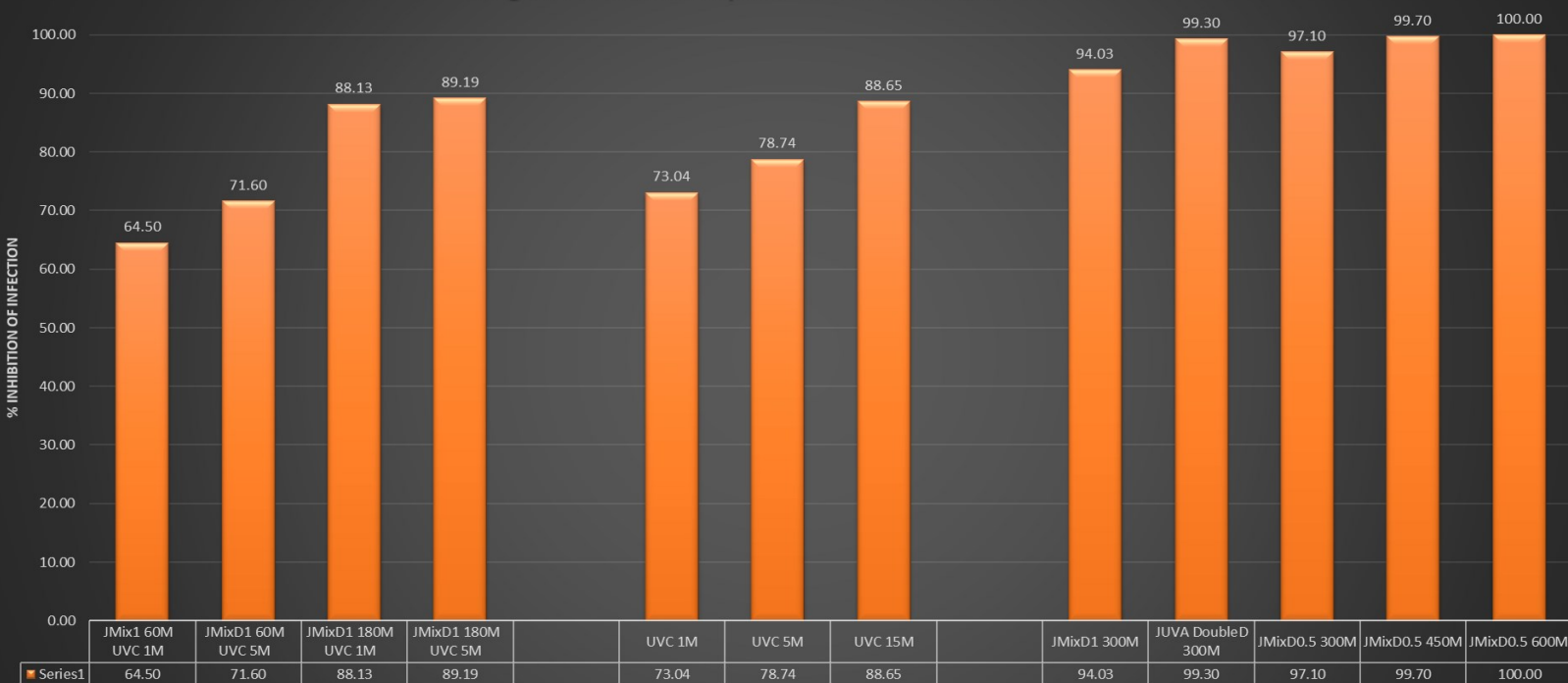
Laboratory Test Results

SARS-CoV-2



Bar-Ilan University
The Azrieli Faculty of Medicine

Juganu JProtect impact on Pseudo SARS-CoV-2



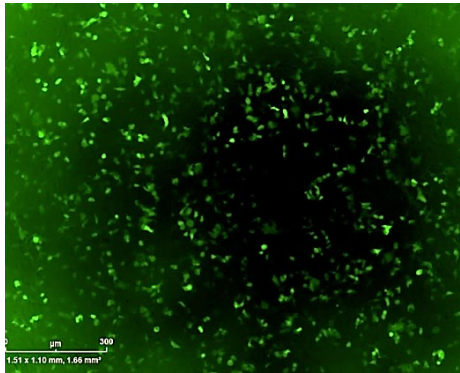
JUGANU JPROTECT DIFFERENT OPERATION MODES IN MINUTES



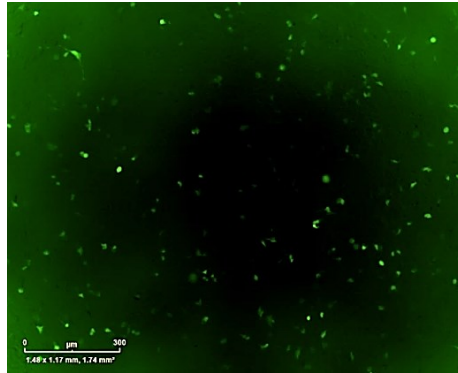
Laboratory Test Results

SARS-CoV-2

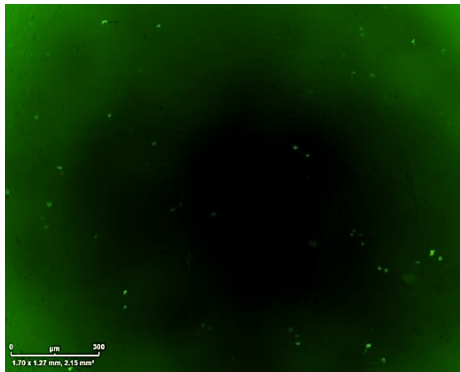
Control 5h at RT



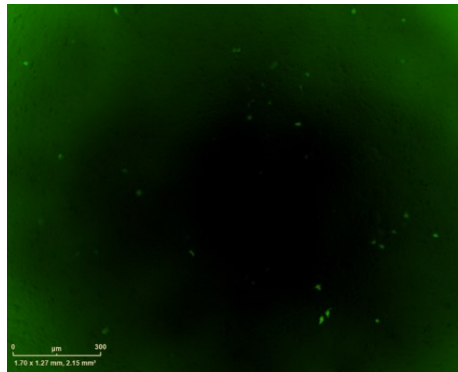
1 h JMix +5 min UVC



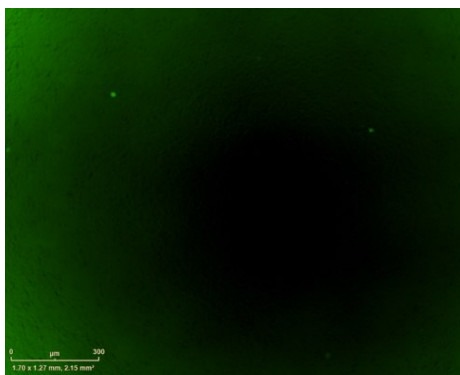
3 h JMix +5 min UVC



5 h JMix



5 h Juganu UVA Only



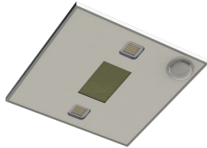


10 h JMix

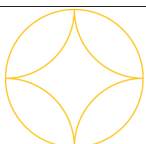


Figure 1. Visualization of the effect of JUGANU Jmix and UV TECHNOLOGY on SARS-CoV-2 Pseudoviruses infection. Images were taken 3 days post infection using IncuCyte® (Live Cell Analysis System). Each image represent one field per well of 96 palte.

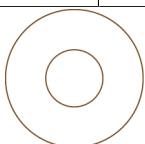
The images demonstrate reduction of infected cells at all irradiation conditions, with no visual infected cells following irradiation of JMix for 10h.

Juganu J.Protect Advantages

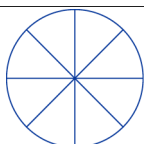
Juganu Technology Advantages	Juganu - J Protect	Other Luminaries	Robots
			
General Lighting	Yes	Partial, Mostly No	No
Continues Protection	Yes	No	No
Disinfection	Yes	Partial	Partial
Energy Efficiency	High	Medium	Low
Wave Length Hazard Ratio	Low	High	Very High
UVC Wavelength	265-275nm	LED: 250-300nm; Mercury: Polychromatic (200-300nm) Monochromatic (254 nm)	LED: 250-300nm; Mercury: Polychromatic (200-300nm) Monochromatic (254 nm)
UVA Wavelength	390-400 nm	365nm (GE)	NA
Safety	PIR, Biometric, QR, Private Wireless Network	NA, Manual	Manual
Rest API (3 rd Party Integration)	Yes	NA	NA
Multifunction: Lighting + UVA + UVC	Yes	No	No
Architecture/ Morphology	Planar	Cylindrical tube or Point source□	Mainly Cylindrical tube
Durability	High Durability Silicon	Fragile glass tube or Rugged semiconductor□	Fragile glass tube
On/ Off Cycles	Unlimited	Mercury: Max. 4 per day; LED: Unlimited	Mercury: Max. 4 per day; LED: Unlimited
Lifetime	>50,000 hours	~10,000 hours for UVC ONLY	~10,000 hours for UVC ONLY
Central Management, Statistics & Reports, Master Admin	Yes	NA	NA
Laboratory Tested with SARS COVID- 19	Yes	NA	NA
Price	Moderate	High	Very High



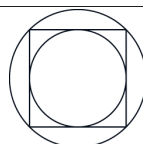
Light



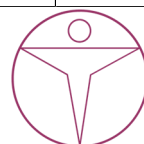
See



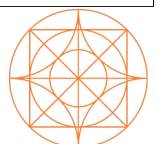
Connect



Think



Pro-



FOAM

USA PARTNER & RESELLER



www.colighting.solutions
sales@colightingsolutions.com

Tom Pearce, Co-Founder & CEO
tom@colighting.solutions
+1.407.745.1952 (o)

